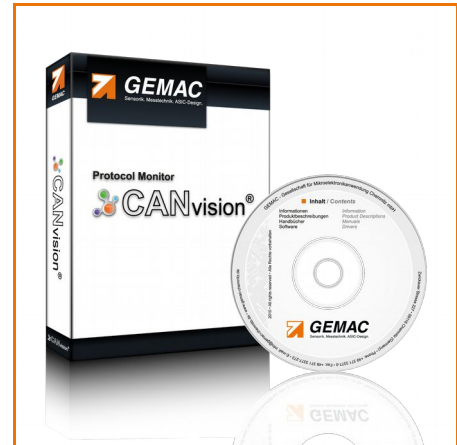


# Protocol Monitor CANvision®

## Features:

The CANvision® - Protocol Monitor is a high-performance tool for the development, start-up, monitoring and service of CAN networks. Due to its modular basic concept according to the client/server principle this tool enables easy handling and can simply be expanded. Therefore, the CAN interface must not necessarily be locally available – remote controlled servers provide the CAN interfaces for all clients.

Thereby, the CANvision® - Protocol Monitor is not coupled to interfaces of a specific manufacturer, but supports the CAN hardware of GEMAC, IXXAT, PEAK and Vector.



## Features:

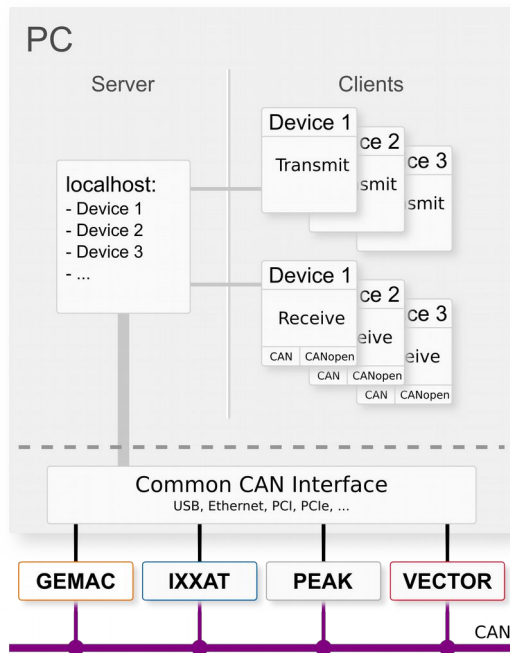
- Support of various CAN interfaces (GEMAC, IXXAT, PEAK, Vector)
- Simultaneous use of numerous CAN interfaces possible
- Display of bus load, as well as transmission, reception and error conditions
- Adjustable filter and trigger conditions
- Single and cyclic transmission of CAN messages as well as sequences (transmission lists)
- Share CAN interfaces on the network (automatic detection via Bonjour service)
- Integrated symbolic decoding of CAN messages
- Import of DBC files via free of charge CAN symbol editor

## CANopen-Module: (optional)

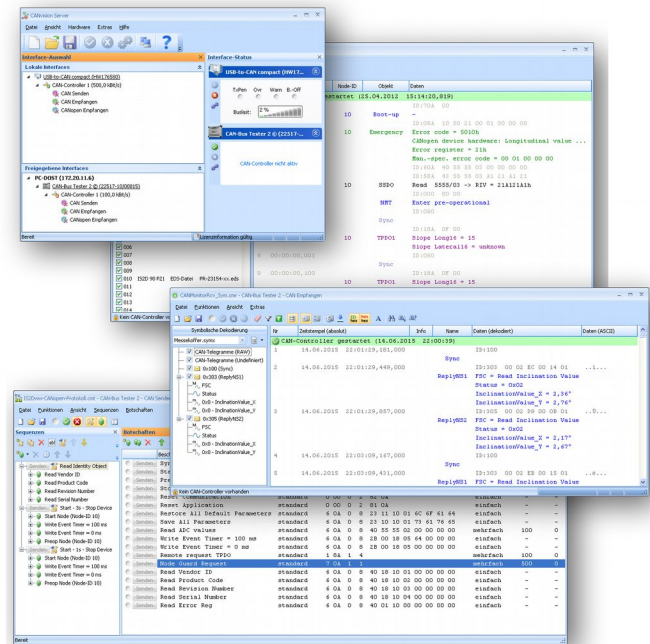
- Interpretation of all received messages as SDO, PDO, NMT, Sync, Timestamp, Heartbeat and Emergency objects, as well as display of the PDO contents
- Filtering according to object types and Node-IDs
- Profiles: CiA 301, 302, 401, 402, 404, 405, 406, 408, 410, expandable
- Import of EDS and DCF files

## SAE J1939-Module: (optional)

- Interpretation of all received messages with source address, parameter group (PGN) and the individual signals (Suspect Parameter - SPN) with name, value and unit.
- Filtering according to source address, PGN and SPN



Software structure



Screenshots

## System requirements:

### Hardware:

- At least 512 MB RAM and 2,0 GHz CPU
- Free USB port (copy protection dongle)

### Supported operating systems:

- Microsoft Windows® 10, 8.1, 7, Vista (32/64 bit), Windows® XP

### Supported CAN interfaces

- GEMAC: CAN-Bus Tester 2
- IXXAT: VCI (e.g. USB-to-CAN)
- PEAK: PCAN (e.g. PCAN-USB)
- Vector XL (e.g. VN1600, CANboardXL)

## Ordering Information:

Product	Description	Article Number
CANvision® - Protocol Monitor	CANvision® - Protocol Monitor (German/English) inclusive <ul style="list-style-type: none"> <li>● CANvision Server</li> <li>● CANvision Client CAN Transmit</li> <li>● CANvision Client CAN Receive</li> </ul> on CD, User manual (German/English) , USB dongle, 1 Year Support extension	PR-22570-00
Support extension 1 Year	Entitles you to install / use of all published software updates within the support period. (included with the purchase of PR-22570-00 for the first year)	SW-22570-00
CANvision Client „CANopen Receive“	License key for <ul style="list-style-type: none"> <li>● CANvision Client CANopen Receive</li> </ul>	SW-22570-10
CANvision Client „SAE J1939 Receive“	License key for <ul style="list-style-type: none"> <li>● CANvision Client SAE J1939 Receive</li> </ul>	SW-22570-11